

# **PEMSEA ICM Learning Centers: On-the-Ground Capacity Building Arms for SDGs on oceans and coasts**

**Johanna Diwa-Acallar**  
Capacity Development Manager  
PEMSEA

# Context

- Building capacity at different levels is required to confront issues and risks affecting the sustainable development of the coasts
- Capacity should be present to build skills required in each stage of the Integrated Coastal Management (ICM) program implementation
- Scaling-up ICM practice require ICM leaders and practitioners who can contribute to effective and efficient implementation of ICM programs
- Mobilizing on-the-ground capacity building arms are crucial to provide technical assistance to the sites
- Academe as one of the important partners

## On-the-ground Capacity Building Strategy

- Designate higher education institutions as ICM learning centers to provide technical assistance in the sites
- Planning and coordinating mechanisms in place
- Provision of scientific expertise and technical support on the ground
- Knowledge sharing and exchange in the region
- Conduct of special skills and training workshops
- Knowledge transfer to replicate success
- Learning-by-doing approaches providing mentoring opportunities



# Existing initiatives in support of SDGs



E-Library

State of the Coasts Reporting

PNLG Tracking System

Capacity Development

PNLC Directory

Certification

E-Directory of Ocean Experts

Partner Ocean Knowledge Partners

Contact Us

IW:LEARN Partner



Home > ICM Communities of Practice > PNLC Directory

## PNLC DIRECTORY



Logo	Country	University Name/Center	SDG Targets	Supported ICM Sites
		Cavite State University	SDG 6.1,6.2,6.3,6.4,6.5,11.2,13.1,13.2,13.3,14.1,14.2,14.3	Cavite, Philippines
		Universidade Nacional Timor Lorosa'e	SDG 6.3,6.4,6.5,13.1,13.3,14.1,14.3	Dili Manatuto Liquiça
		Center for Sustainable Development Udayana University	SDG 6.1,6.3,11.2,13.3,14.3	Bali Province
		ROYAL UNIVERSITY OF PHNOM PENH / Integrated Coastal Management Learning Centre	SDG 6.1,6.2,6.4,6.5,11.1,11.2	Cambodia coastal provinces: Koh Kong, Preah Sihanouk, Kep and Kampot.
		University of the Philippines VISAYAS/Division of Biological Sciences	SDG 13.3,14.1,14.2	PEMSEA
		DE LA SALLE LIPA	SDG 6.1,6.2,6.4,6.5,11.2,13.2,13.3,14.1,14.3	PART OF VERDE ISLAND PASSAGE FOR BOTH BATANGAS AND BALAYAN BAYS. AND PORTION OF TAYABAS BAY
		Prince of Songkla University	SDG 14.1	Marine Science Learning Center Department of Biology, Faculty of Science, Prince of Songkla University Hatyai, Songkhla, Thailand 90112
		Xavier Ateneo	SDG 6.1,6.2,11.2,13.3,14.1,14.3	
		Univercidade Oriental Timor Lorosa'e	SDG 13.2,13.3,14.1	
		Center for Coastal and Marine Resources Studies, Bogor	SDG 6.1,6.2,13.2,14.1,14.2	- In the PEMSEA's scheme : * Regency of Sukabumi, Regency of Tangerang, Regency of East Lombok and



PREPARE FOR INVESTMENT



FIND INVESTMENT OPPORTUNITIES

LOG IN

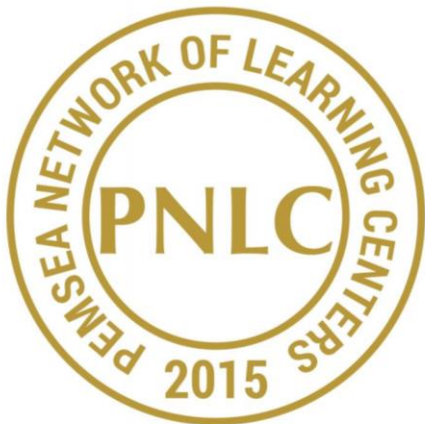




# Communities of Practice (CoPs): PNLC

## Science-based and transdisciplinary approaches

- Research: Scientific knowledge enhanced
- Education and Training: Implementing capacity increased
- Community involvement: Decision making informed through consultation and inputs from 'local' experts



*The PNLC was established to  
promote wider dissemination  
and transfer of knowledge,  
experience and skills in ICM  
practice, tools and  
methodologies among the LCs  
within countries and across the  
region.*

PEMSEA  
Network of  
Learning  
Centers



# ICM and special skills regional workshops

*OHI+ Regional Workshop  
Manila, 13-14 March 2017*



*Marxan with Zones Regional Workshop  
Chonburi, 7-10 August 2017*

*Regional ICM Training of Trainers  
Batangas, November 20-24 2017*



# Training manuals and knowledge products

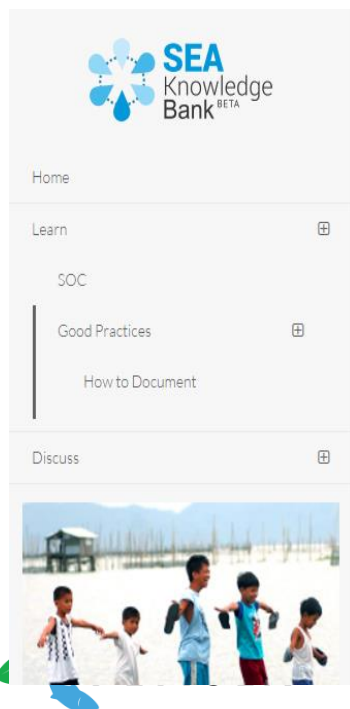
- Special skills trainings and workshops organized and conducted to develop/strengthen ICM training programs and provide on-the-ground capacity development and support services to implement ICM programs
- ICM LCs served in Expert Working Group for technical review and assessments of ICM Training Manual, special skills modules and other PEMSEA technical documents
- ICM LCs to assist in special skills training modules disseminated translation to local languages and use in the sites
- Regional and Nat'l Task Forces mobilized to provide technical support to nat'l and local governments in program development, project implementation and capacity building





# Access and Contribute to Learn and Knowledge Products

- e-Library containing case studies, best practices, training manuals, etc. focused on protection and management of ecosystem services and blue economy development
- learn pages are intended to provide easy access to good and exemplar materials and practices on management of coastal and marine ecosystem services and investing in blue economy; an to facilitate transfer of knowledge to planners, managers and decision-makers in the region
- Innovative tools/applications, such as ecosystem valuation, marine spatial planning, State of the Coasts reporting and investment-readiness assessments



Home > Learn > Good Practices

## GOOD PRACTICES

Sharing of good, exemplary or 'best' practices is a good way in achieving sustainable solutions to the different problem areas in Integrated Coastal Management. This would be useful in providing information to increase, share and disseminate knowledge on what practice works best for certain situations or scenarios in governing and managing coastal areas. These knowledge products showcase the success and lessons learned from different ICM programs and projects which can be adopted for the sustainable use of our seas and oceans.

Type of KPS	Problem Area (and Subject)	Location
- Any -	- Any -	- Any -

[Filter KPS](#)



### Visualizing the Health of Coastal and Marine Ecosystems: Systematic Gathering and Use of Data and Information for Effective Planning and Management of Coastal and Marine Areas

Managing coastal and marine areas and resources entails working with many different social and economic sectors and scientific disciplines. Each sector has its own data and information. Integrated coastal management (ICM) requires access to this wide array of data and information. More importantly, understanding and applying socioeconomic, cultural and natural values, and demography and ecological conditions as input to policymaking and planning are key to a successful program.

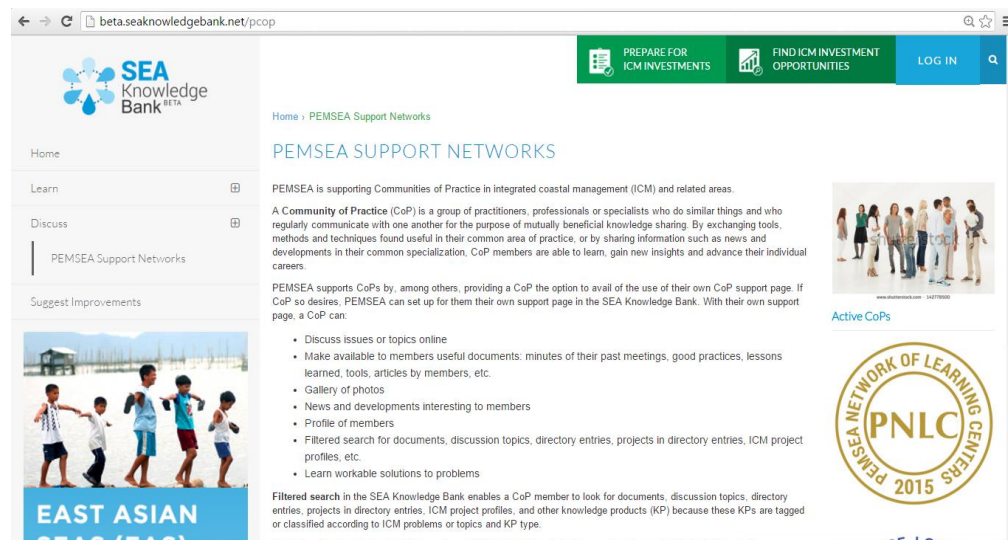


- Write a KP page
- Contribute your Success
- Pemsea.org Manuals
- IW:Learn Manuals



# Support from Experts

- **Access and be part of the experts e-Directories**
  - Organization or individual' experts that are classified and tagged according to ICM problem areas that local governments are expected to address
- **Exchange Solutions**
  - Mechanism for matching problems submitted by local governments and workable solutions from other local governments and from CoP members
- **Be a part of the Communities of Practice**
  - Sharing of tools, good practices, technical articles
  - Online forums or discussions
  - Access to meetings, conferences and study tours
  - CoP support website



## Results:

- Increased technical support available on the ground
- Replication of best practices and lessons learned from demonstration sites to younger sites
- Strengthened intellectual capital on ICM principles and practical skills in ICM implementation
- Increased partnerships and collaborations
- Raised awareness among local stakeholders, especially the local government, by training in ICM principles and practical activities
- Strong expert knowledge and scientific information for policy and management interventions available in the region

## Plenary

- *What existing initiatives in core activities of your respective institutions contribute to ocean and coastal goals?*
- *How might your institutions' strong areas and similar interests in education, training and research support the proposed collaborative initiatives under the PNLC framework?*

## Panel Discussion

- *Each panelist has 5 minutes to provide feedback on the presentations by identifying similar interests and highlighting initiatives that they can support (curriculum development, research, training). They may highlight further challenges to respond to capacity building needs and/or provide inputs for collaboration opportunities that are relevant to their institutions.*
- *After the panelists, the floor will be opened to the public for Q&A.*

## Planning Meeting Workshop (For PNLC Members)

*Action planning*





[www.pemsea.org](http://www.pemsea.org)

<http://seaknowledgebank.net/>



facebook.com/pemsea



twitter.com/pemsea



linkedin.com/company/pemsea



# Provision of Technical Support on the Ground

- PNLC-BUU facilitating consultations on pollution from shipping activities in Sriracha Bay
- University of the Philippines Visayas (UPV) providing technical support in studies in Taklong Island National Maritime Reserve



- UNITAL and UNTL in Timor Leste assists in ICM activities and special trainings in food processing, saltmaking, aquaculture, etc.

## UPV Studies in Taklong Island National Marine Reserve, Guimaras

### A. Biodiversity & Ecosystem Health Monitoring:

- 1- Reef Live Coral Cover
- 2- Crown-of-Thorns
- 3- Mangrove
- 4- Seagrass and Seaweed
- 5- Mollusks & Crustaceans
- 6- Echinoderms

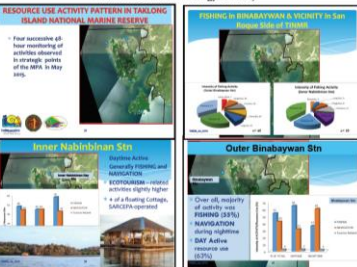
### B. Restocking of Depleted Resource

### C. Resource Valuation & Resource Use Activity Pattern Monitoring for better MPA Management

Taklong Island has 24 species of mangrove species, most number of species in Nueva Valencia and most number of families (f=13) in the Province of Guimaras (f=14), 2<sup>nd</sup> most diverse in the Province of Guimaras (s=29) (Saldaña et al. 2009).



### Crown of Thorns Scorpion (COTS) Removal Activities in 2010, 2011, 2012 (by summer UPV Field Biology Classes)





# Learning-by-Doing Approaches (RCoE to LCs)

- Application of 'artificial mussel' technique for heavy metal monitoring in Saensuk Municipality, Chonburi and Manila Bay, Philippines (BUU, MERIT, UP-MSI)
- Causes and impacts of plankton blooms in Bangsaen Beach, Thailand (DMCR, BUU, Chulalongkorn University)
- Community-based fisheries (proposal submitted to Luce Foundation with UPV and BUU in collaboration with University of Hawaii)

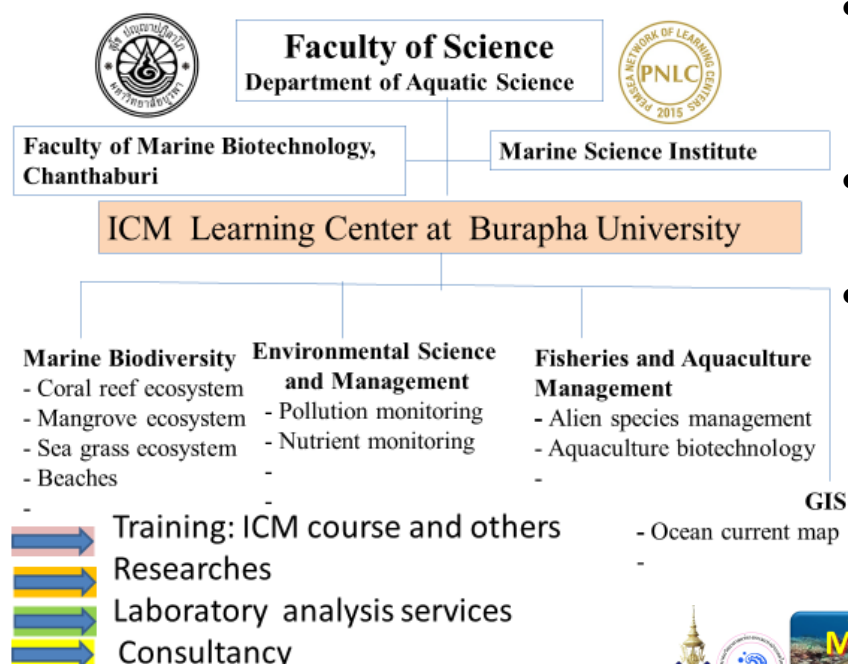


## Lessons Learned

- Tapping research and educational institutions promotes effective capacity building efforts on the ground
- Working on a shared understanding of goals and missions and required measures contribute to successful coordination between learning centers and sites
- Coordinating mechanisms and institutional arrangements in place ensures key participation of stakeholders
- Mentoring can serve an on-going channel for knowledge exchange between LCs and RCoEs and among LCs
- Hands on approach is an effective means to build ICM capacity on the ground
- PNLC encourages relationship and network-building towards building a critical mass of ICM experts in the region

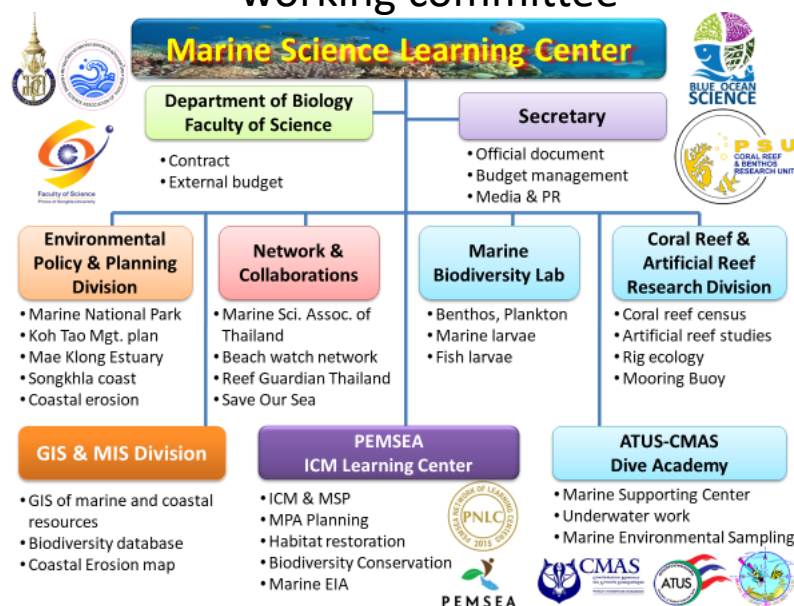


# Planning and coordinating mechanisms in place

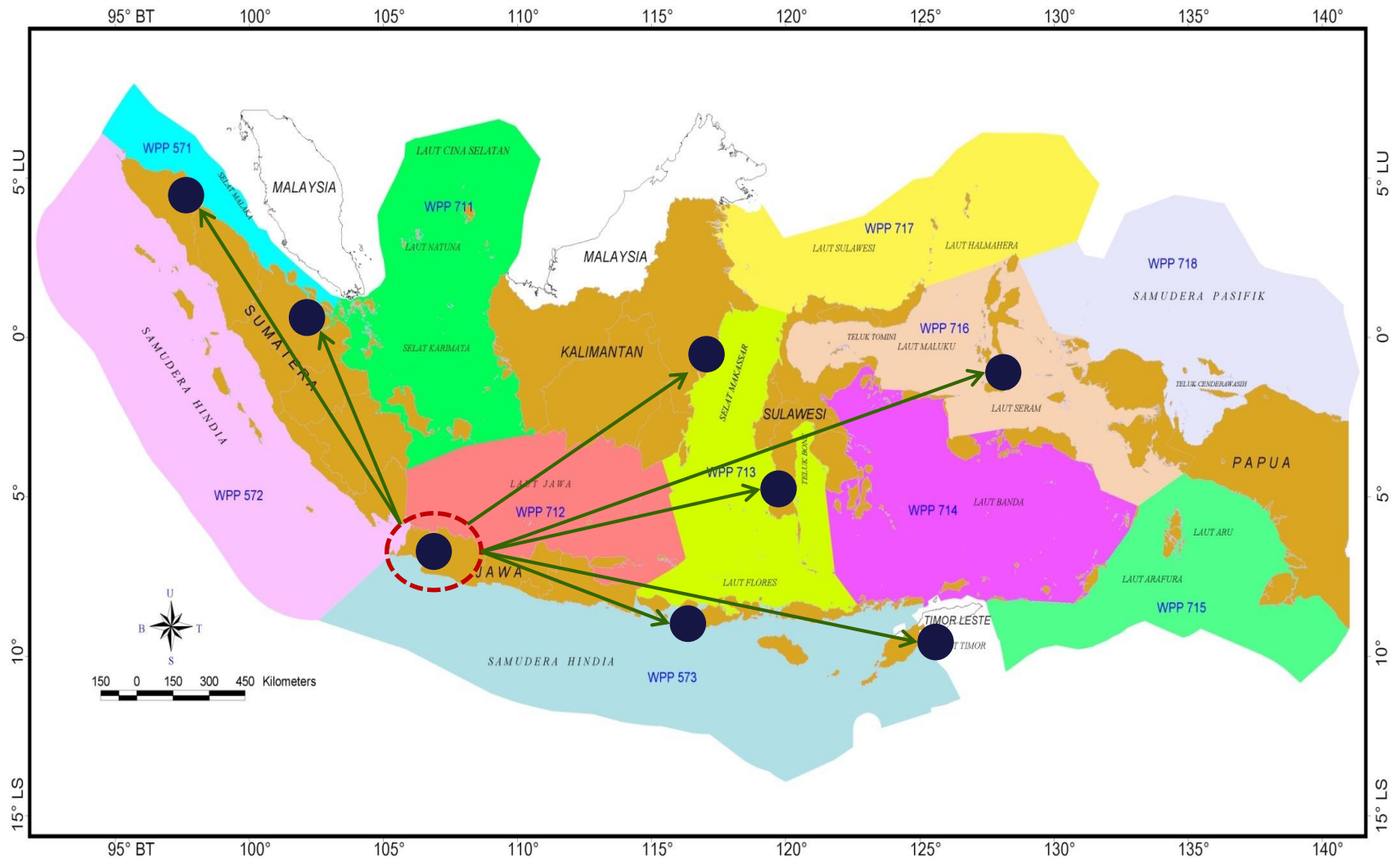


- BUU-PNLC established under Faculty of Science through President's Order B.E. 2259 (2016)
- Appointment of a DMCR Representative in the Board of Directors for BUU-PNLC
- Key persons from 4 provincial offices of environmental and natural resources, OMCRM (Chonburi, Rayong-Chanthaburi and Trad) and from local governments at pilot sites as members of BUU-PNLC working committee

- PEMSEA ICM Learning Center established under the Marine Science Learning Center of PSU



## ICM Learning Centers in Indonesia replication model for satellite LCs focusing on local sites



# Dedicated PNLC microsite in SEA Knowledge Bank



Browse E-Library



State of the Coasts Reporting

Discuss

ICM Communities of Practice

Find Expertise

Certification

Training Courses and Study Tours

Contact Us

IW:LEARN Partner



PREPARE FOR  
INVESTMENT



FIND INVESTMENT  
OPPORTUNITIES

LOG IN

[Home](#) > [ICM Communities of Practice](#)

## ICM COMMUNITIES OF PRACTICE

A **Community of Practice** (CoP) is a group of practitioners, professionals or specialists who share similar activities and who regularly communicate with one another for the purpose of mutually beneficial knowledge sharing. By exchanging tools, methods and techniques found useful in their common area of practice, or by sharing news and new developments in their common specialization, CoP members are able to learn, gain new insights and advance their development.

Online CoPs are available on the SEA Knowledge Bank offering the following features:

- Forum to discuss issues and topics of interest
- Document libraries, which could be used to share minutes of past meetings, good practices, lessons learned, tools, articles by members, etc.
- Gallery of photos
- News and developments relevant to members

### Active CoPs

