

Local government's perspectives on the challenges and applications of earth observation data at the local level

Presented by: Mr Rapin Chhoun

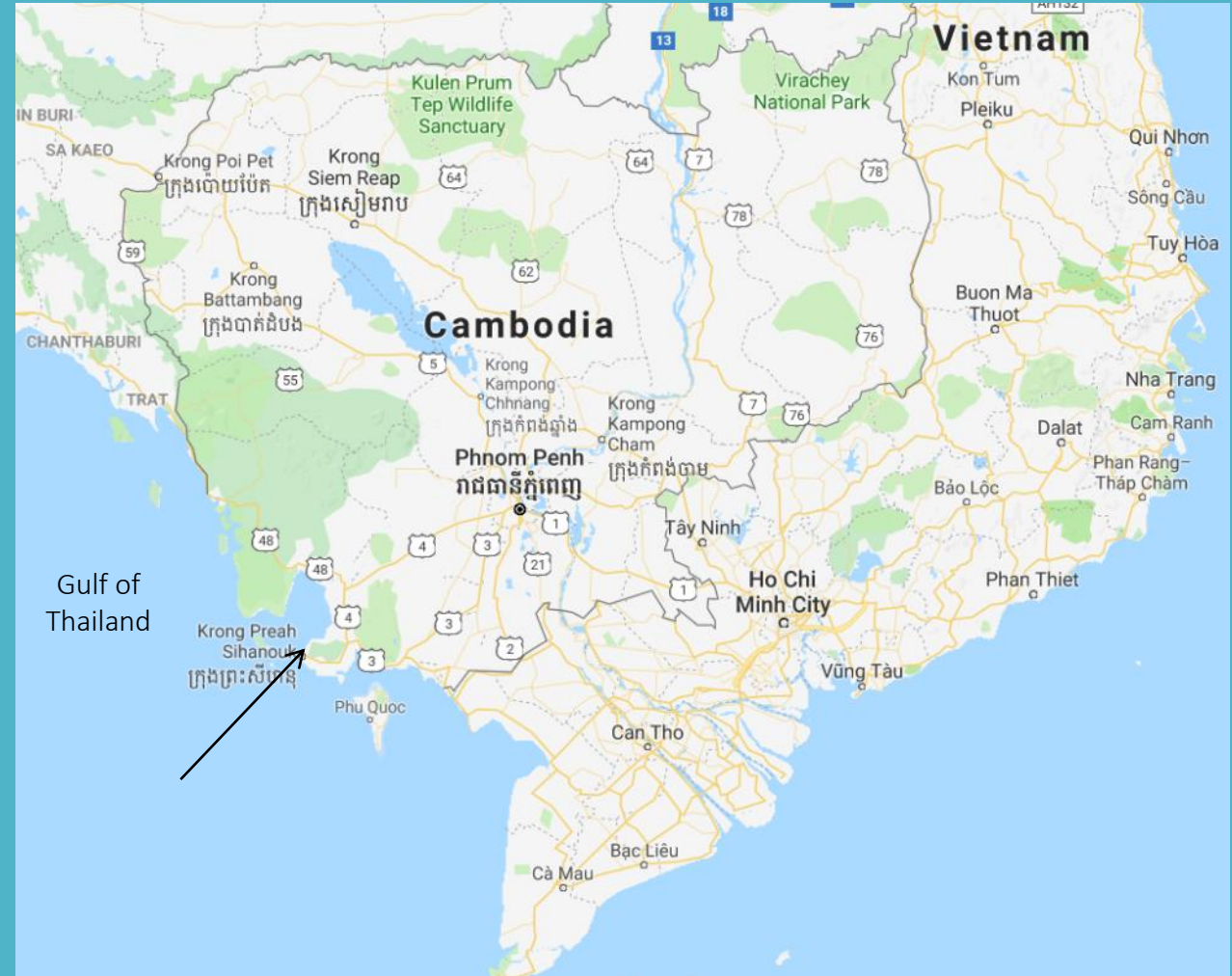
Vice chief of Cadastral Technique and Geography.

Preah Sihanouk Provincial Department of Land Management, Urban Planning, Construction, and Cadastre. Cambodia



1. Geographical Location of Preah Sihanouk Province

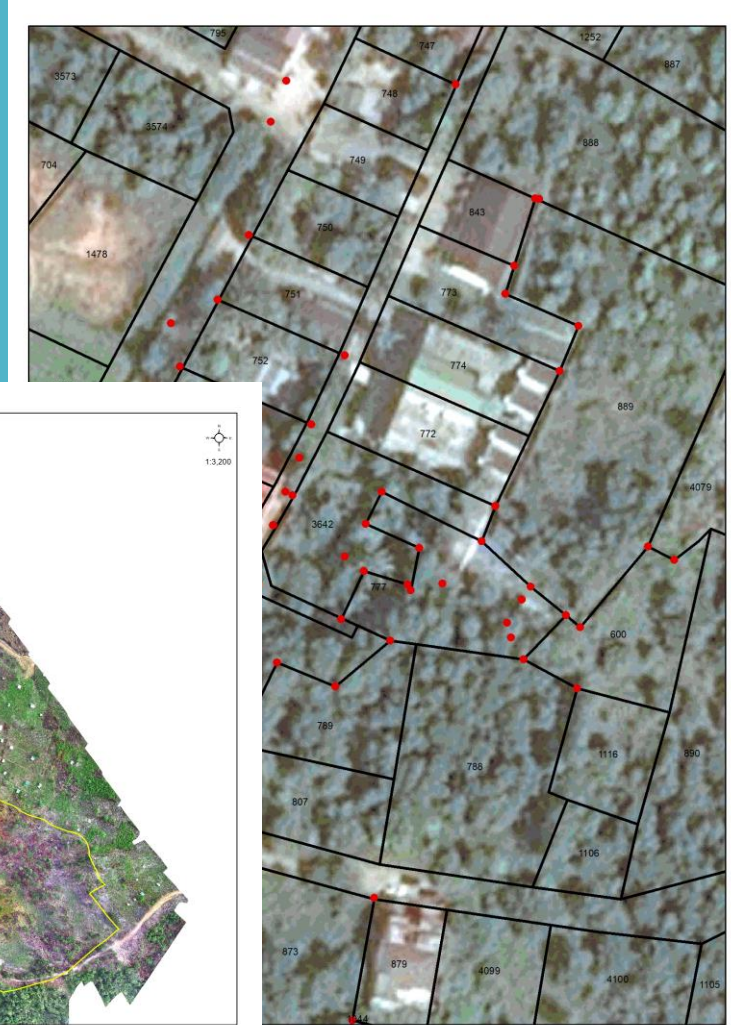
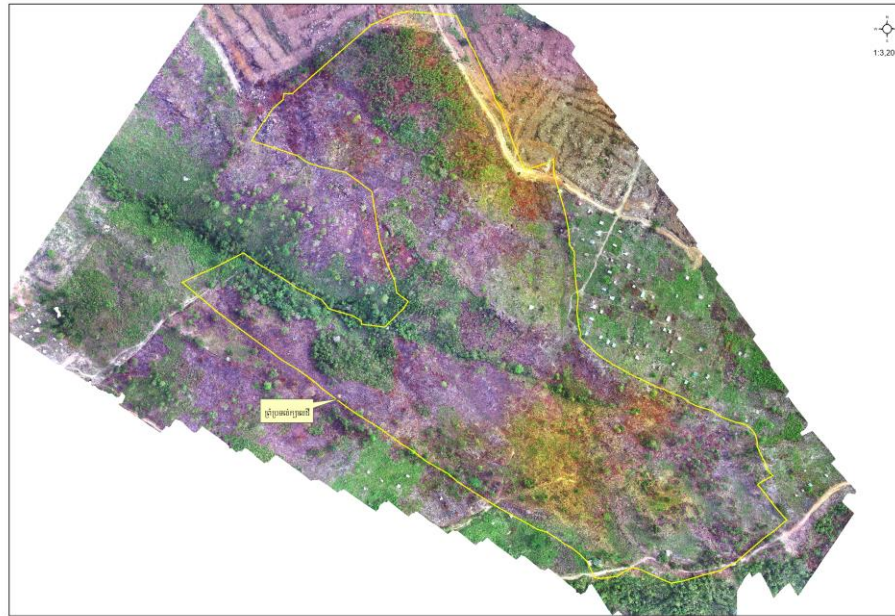
South-west of Cambodia and in the Gulf of Thailand



2. Applications of remote sensing data related to local government planning

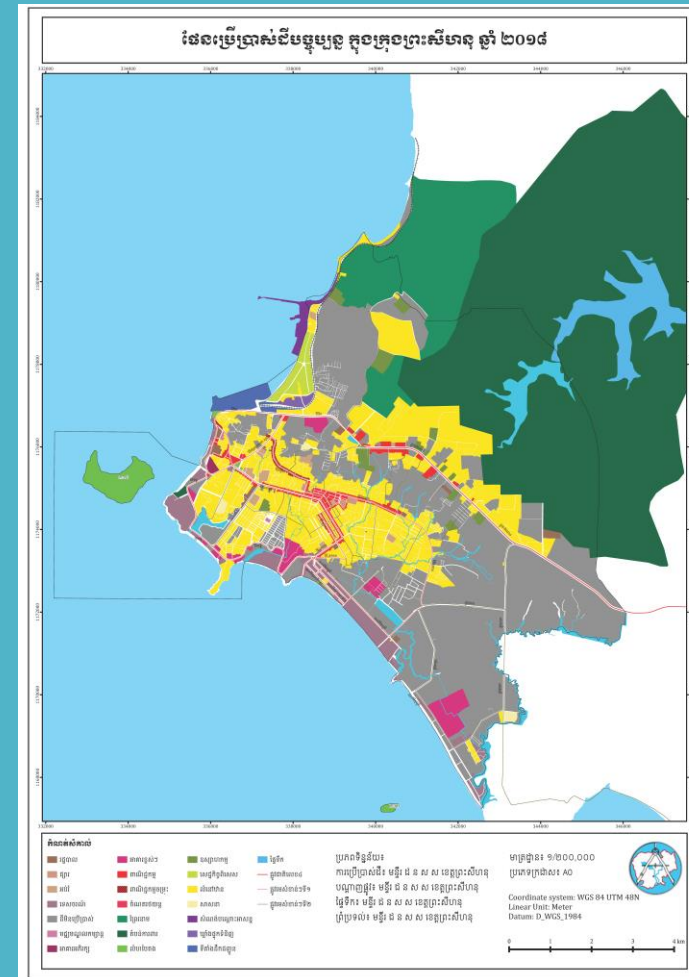
2.1 Land Administration Sector

- Community land registration
- Land conflict solution, and management



2. Applications of remote sensing data related to local government planning

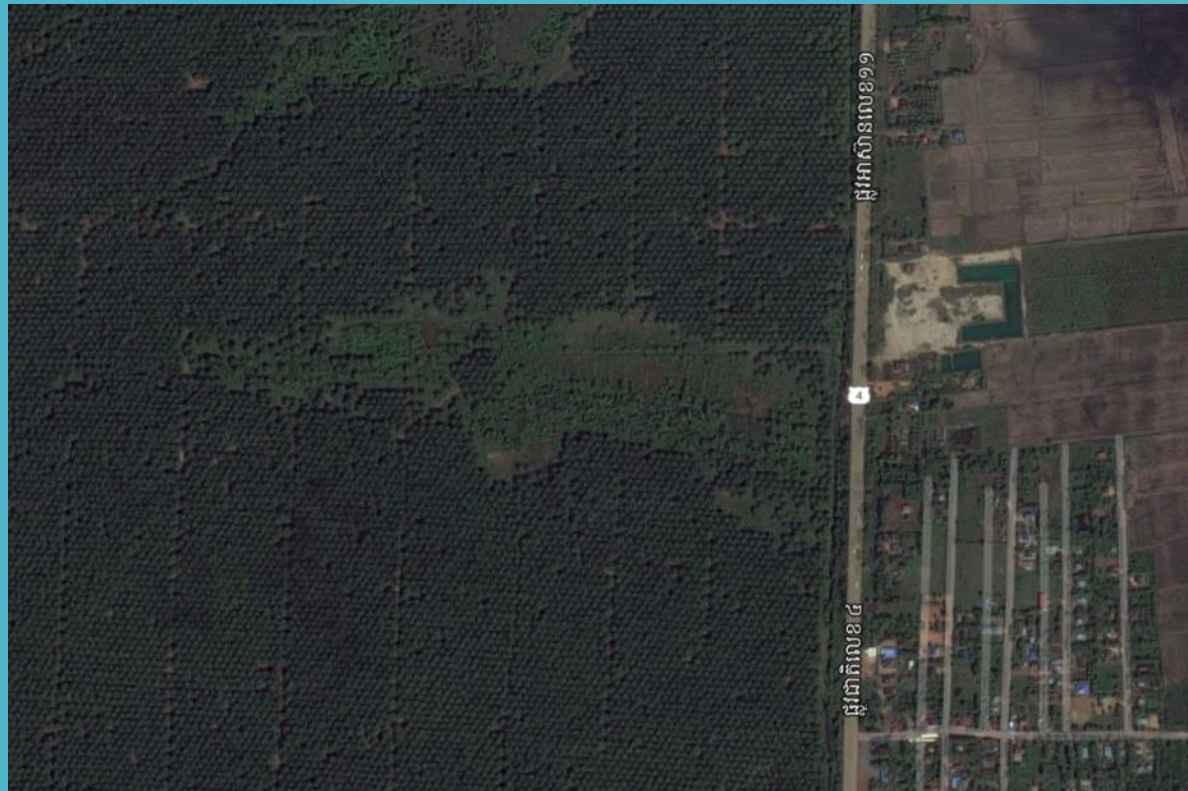
2.2 Land Management Sector - Land use planning



2. Applications of remote sensing data related to local government planning

2.3 Economic Land Concession

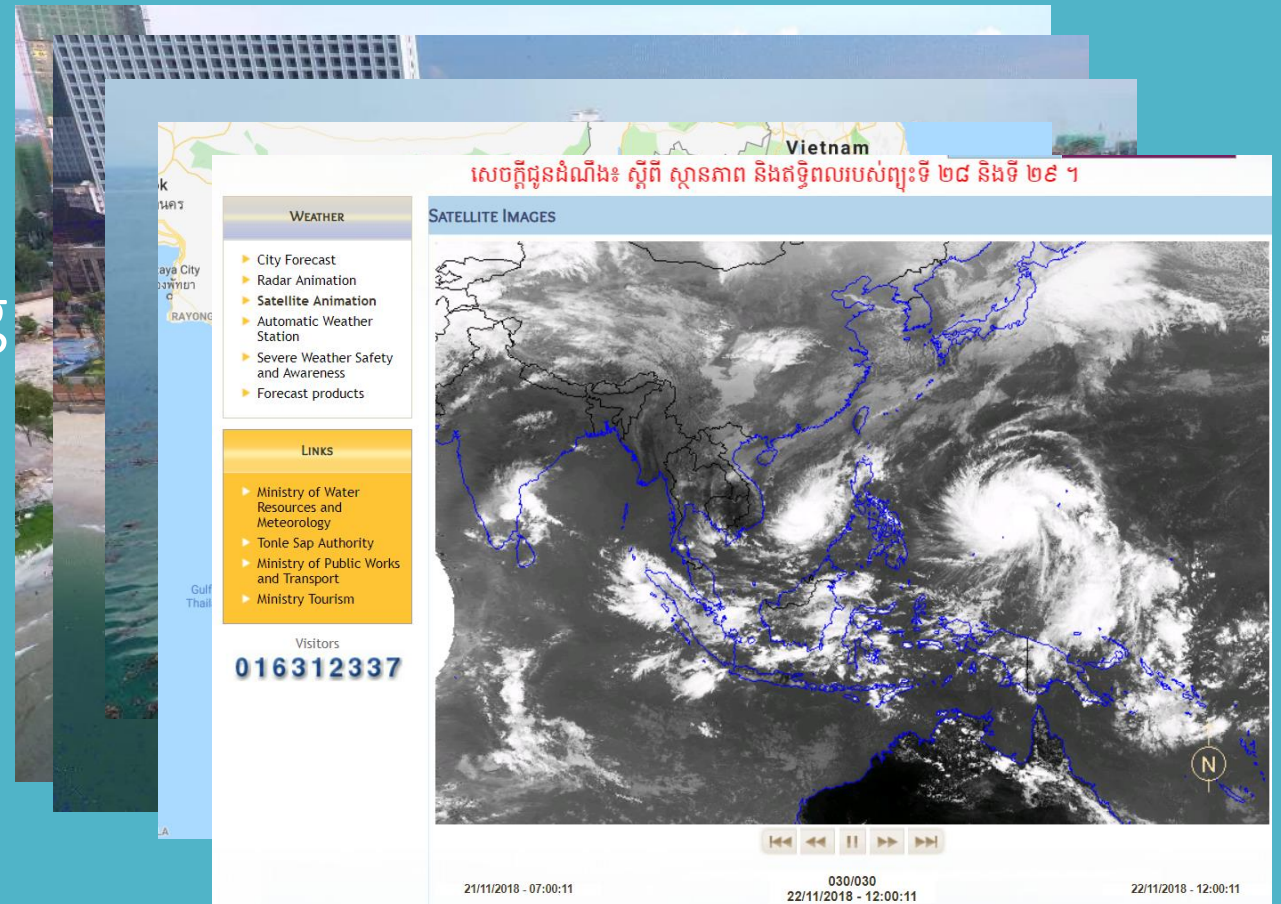
- Palm oil land concession



2. Applications of remote sensing data related to local government planning

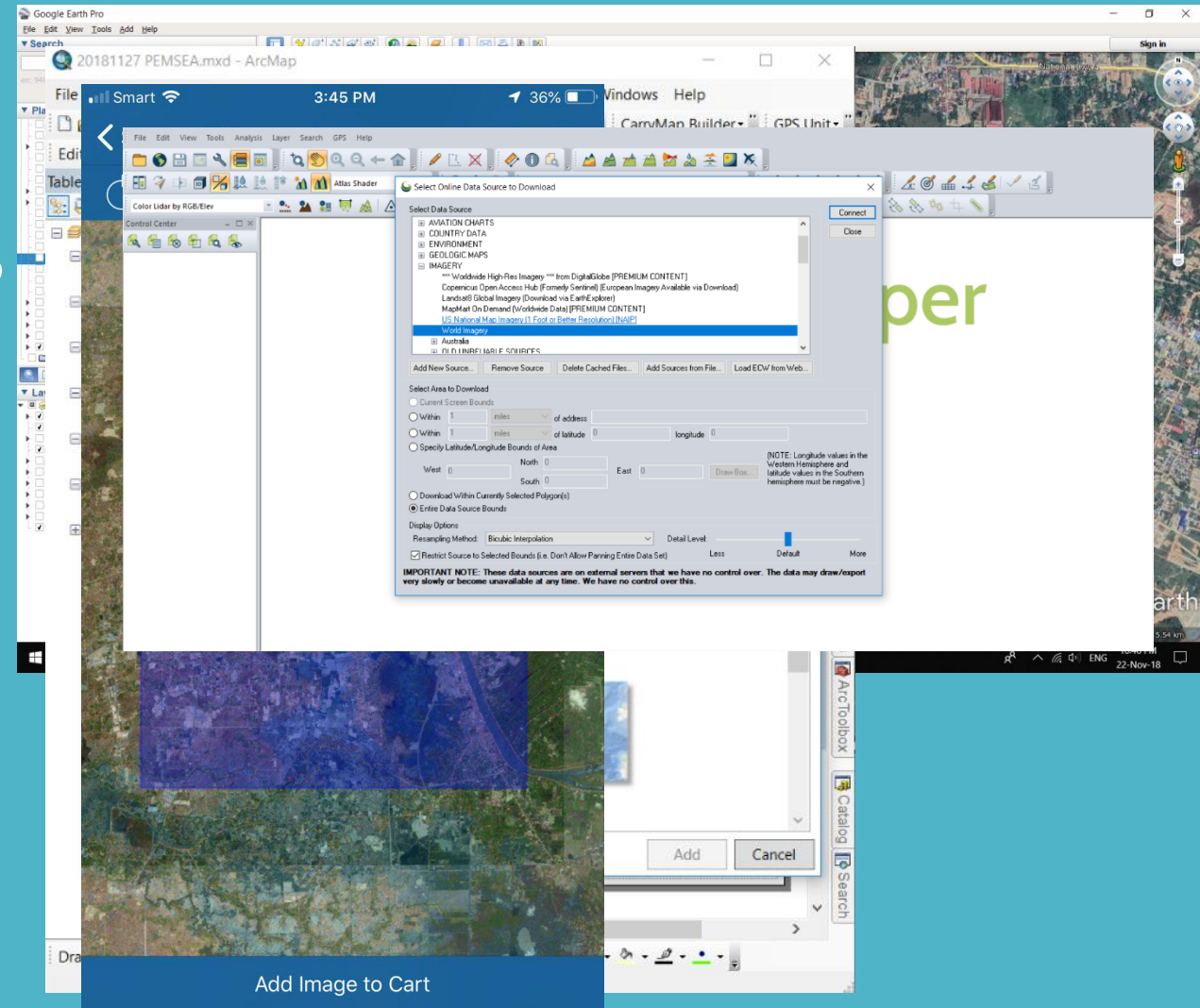
2.4 Environment and Meteorology Sector

- Sea water pollution
- Sea current awareness
- Storm hot spot mapping



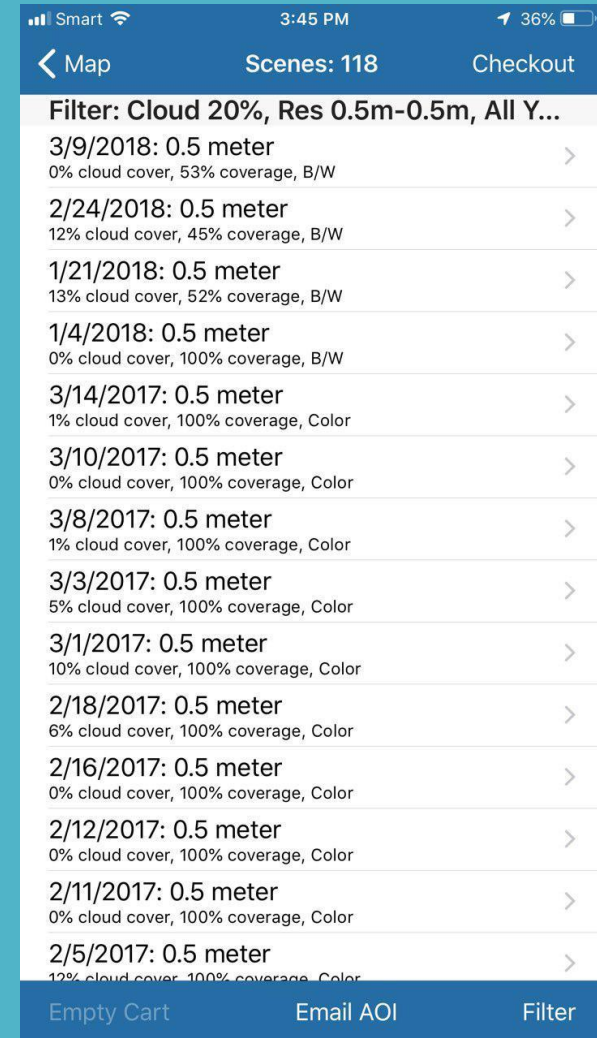
3. Data sources and its limitation

- Google Earth
- ArcGIS Online Basemap
- OpenLayer 3 plugin for QGIS
- Mapmart App
- Global Mapper Software
(Online Central Market/
processing)
- Resolution and Coverage



4. Challenges in accessing or processing remote sensing data

- Data source
- Date of data availability
- Data Visibility
- Data cost
- Human resource
- Public Awareness



5. Potential applications in relation to local government planning, management, decision making using remote sensing data

- Oil spills controlling
- Sea water quality management
- Construction planning
- Spatial infrastructure planning

6. Financial and technical support needed to maximized the use/application of remote sensing data for local government planning, and decision making for ocean, coastal and environmental management

- Ocean, coastal and environmental management team
- Community driven ocean, coastal and environmental management
- Equipements
- Capacity building
- Public awareness

Thanks for your attention

