



Yellow Sea LME Small Grant Program

Sangjin LEE

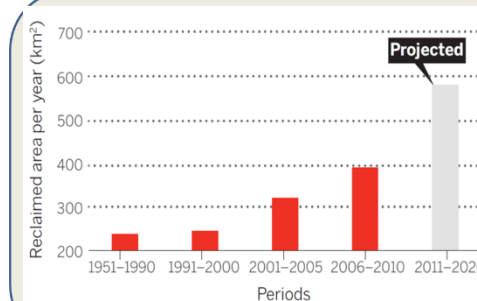
UNDP/GEF YSLME Phase II Project, UNOPS

Email: SangjinL@unops.org



Transboundary issues

- Pollution and contaminants
- Eutrophication
- Harmful algae blooms (HABs)
- Fishing efforts exceeding ecosystem carrying capacity
- Unsustainable mariculture
- Habitat loss and degradation
- Jellyfish blooms
- Change in ecosystem structure
- Climate change-related issues



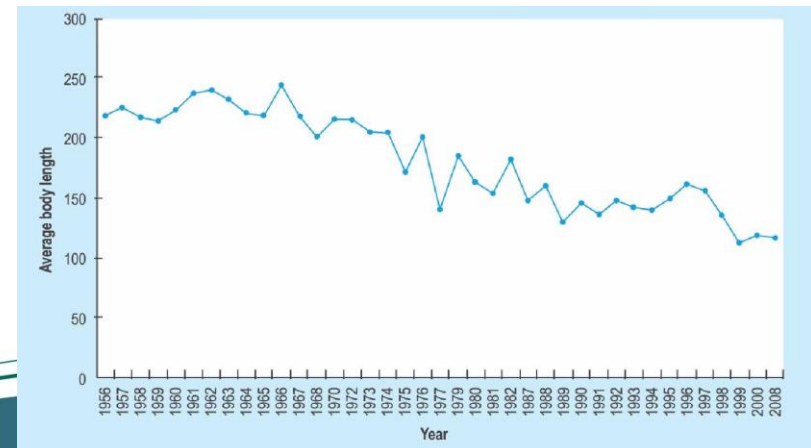
围垦速率:

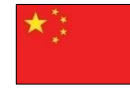
240 km²/yr, 1950-2000

400 km²/yr, 2006-2010

600 km²/yr, 2010-2020

(马志军等, *Science*, 2014)





Empowered lives.
Resilient nations.



Delivering on-the-ground Results through Yellow Sea Grant Program to Promote Regional Collaboration of CSOs in YSLME SAP implementation

- Build on experiences of SGP in YSLME Phase I
- Improve the overall capacity of the society for ecosystem-based management of LMEs
- Setting as an objective to develop the capacity of CSOs in resource mobilization and organizational development
- Relevant to the SAP targets
- Leveraging comparative advantage of CSOs and complementing other partners' initiatives and country-level SGP in EBM of LME;
- Prioritizing regional collaboration, cross-country knowledge sharing and cooperation
- GEF support at the beginning and trust fund support in the future pending approval by the Interim YSLME Commission Council
- To be launched in December 2018

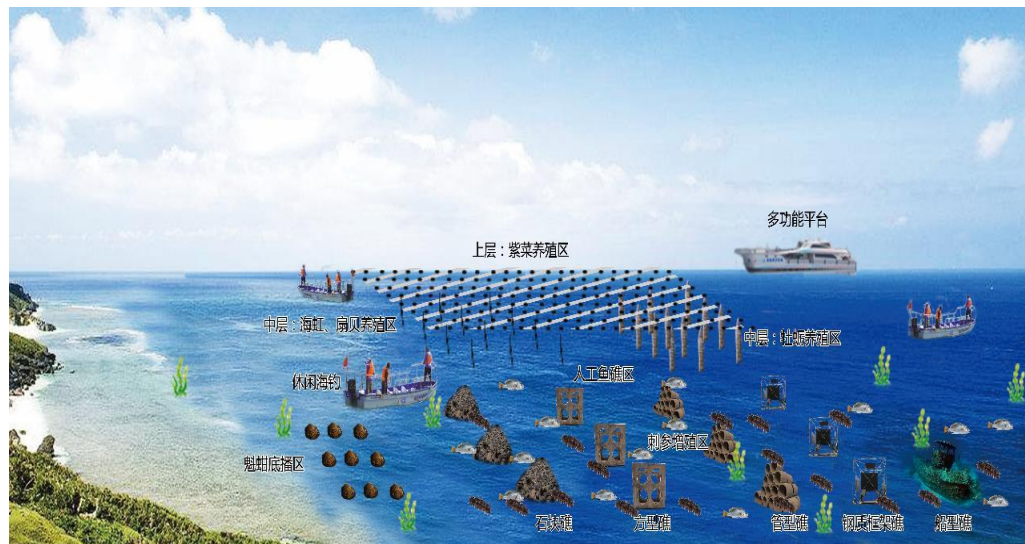
Relevance



11 YSLME SAP Targets

- **25-30% reduction** in fishing efforts
 - **Rebuild** marine living resources
 - **Improve** mariculture techniques to reduce environmental stress
- **Maintain** and **improve** of current populations and distributions of genetic diversity of living organisms including endangered and endemic species
 - **Habitat maintenance** according to 2007 standards
 - **Reduce** of risks of introduced species
- **Meeting international requirements** on contaminants
- Better understanding and prediction of ecosystem changes for **adaptive management**
- **Reduce** total loading of nutrients from 2006 level
 - **Reduce** standing stock of marine litter
 - **Reduce** contaminants in bathing beaches and other marine recreational waters

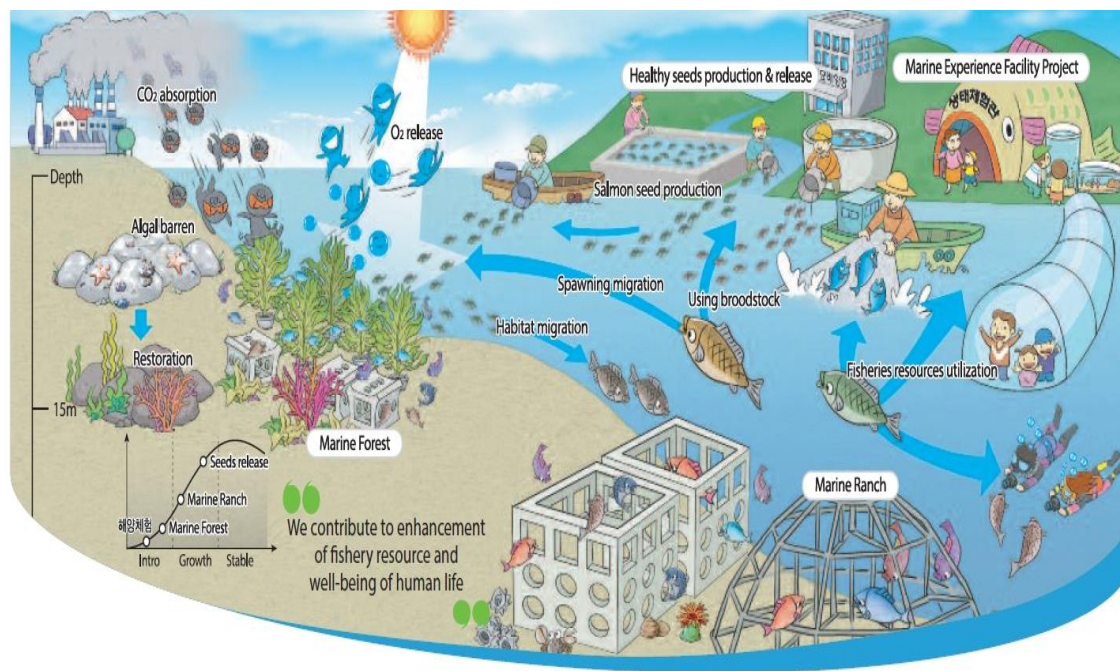
Re-employment education of fishermen displaced from vessel buy-back scheme in reducing fishing efforts



- ✓ Leisure sea fishing
- ✓ Yacht sea sightseeing
- ✓ Fishing experiencing
- ✓ Sea wedding photography
- ✓ Island fishermen experiencing
- ✓ Fish releasing public service activities



KEY MAP of Fisheries Resources Enhancement Projects

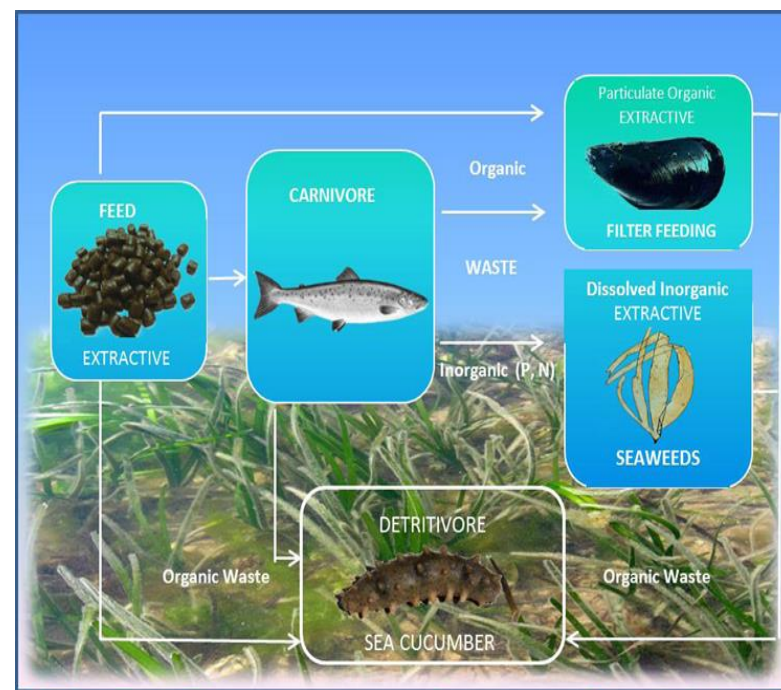


Support to establishing and maintaining IMTA Enterprise Alliance at national and sub-national levels



Integrated multitrophic aquaculture to address multi-stressors in mariculture

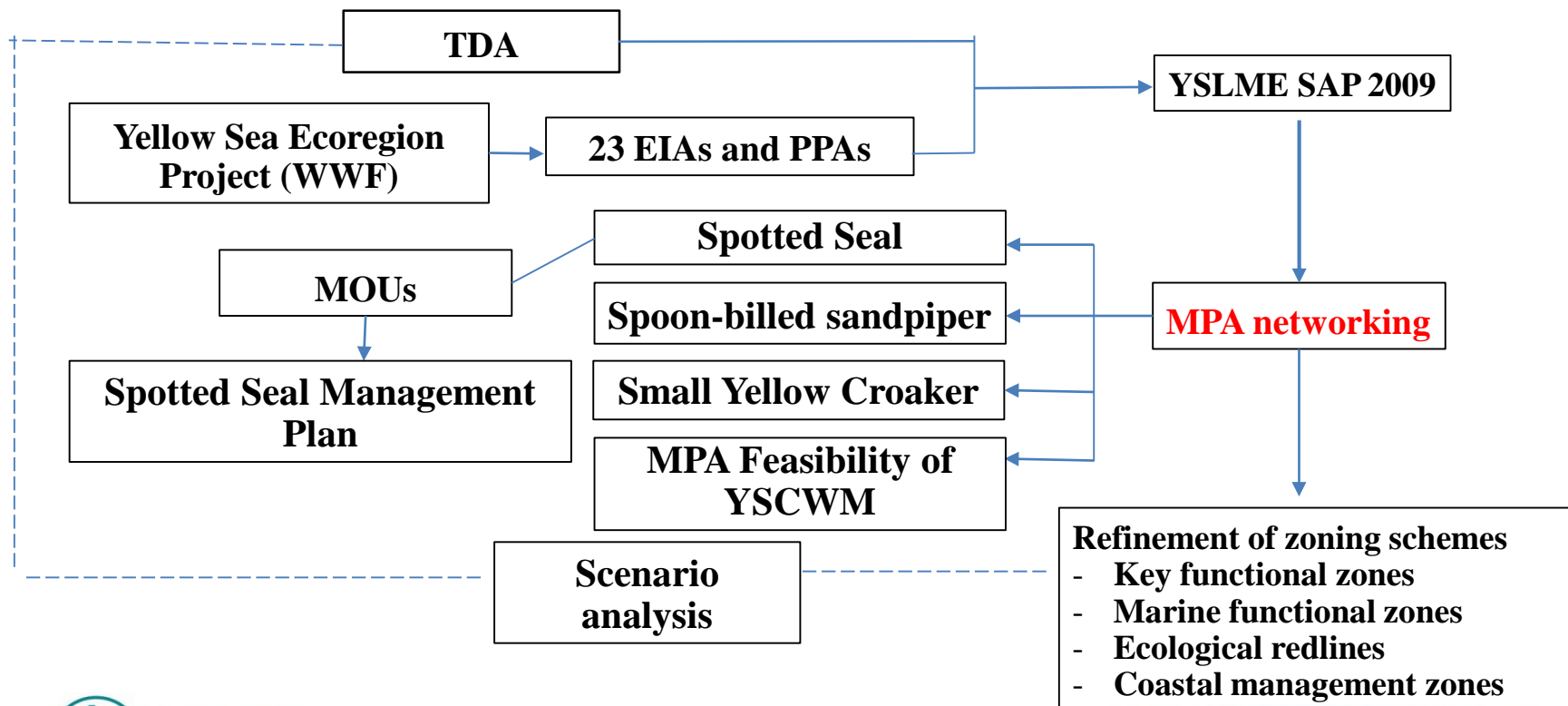
- Highly energy efficient
- High production per unit area
- Increases the social acceptability of culturing systems
- optimizing the carrying capacity of coastal embayments
- improving water quality through intake of nutrients and phosphorus
- increasing protein yields
- through carbon capture, contributing to mitigation of the effects of climate change



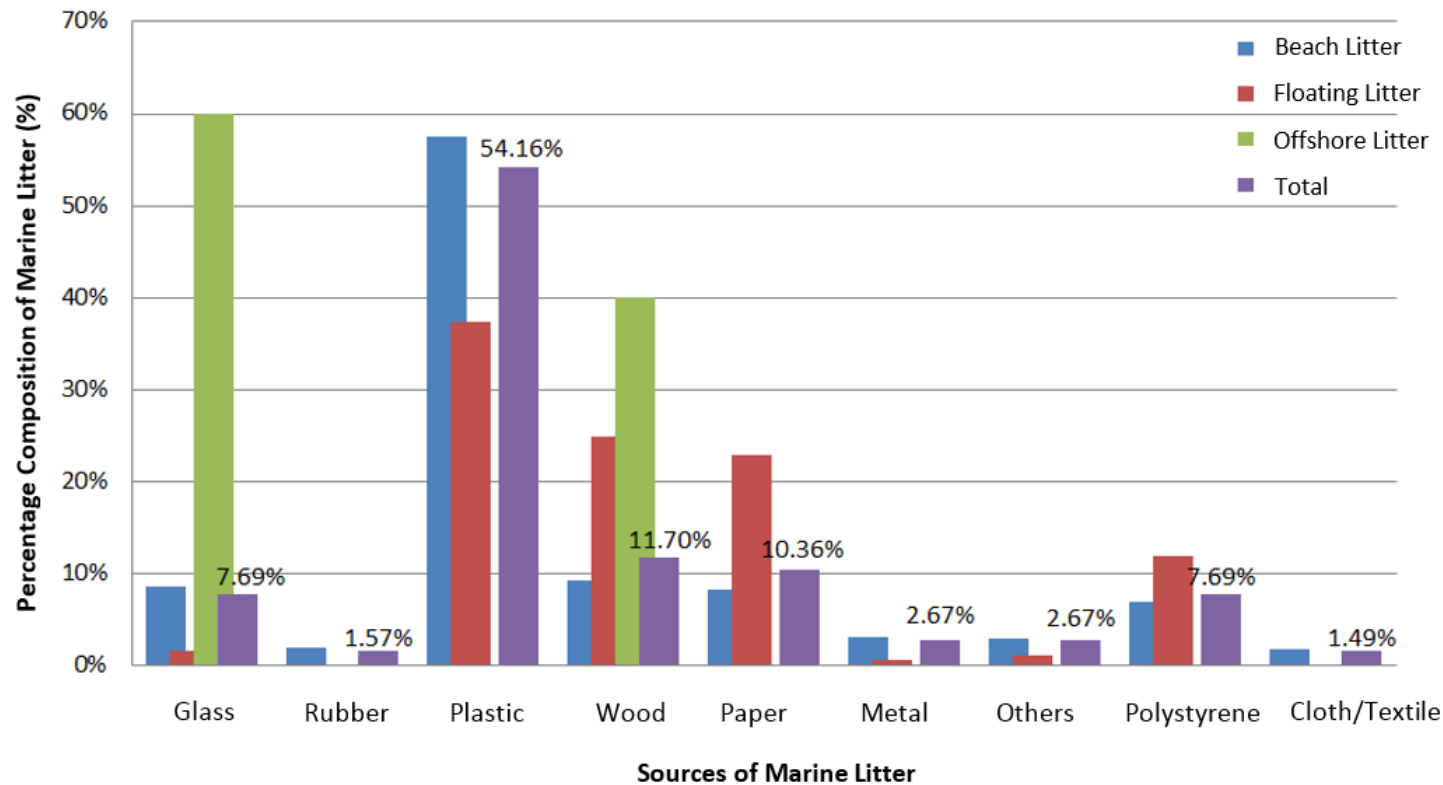
(IMTA structure from Fang et al. 2009)



Support to monitoring, threats reduction, awareness raising and co-management in support of MPA networking and integration of MSP into TDA/SAP implementation



Support to community actions to reduce marine litter ending up in the sea



Thank You!