



# **GEF-Small Grants Programme Malaysia**

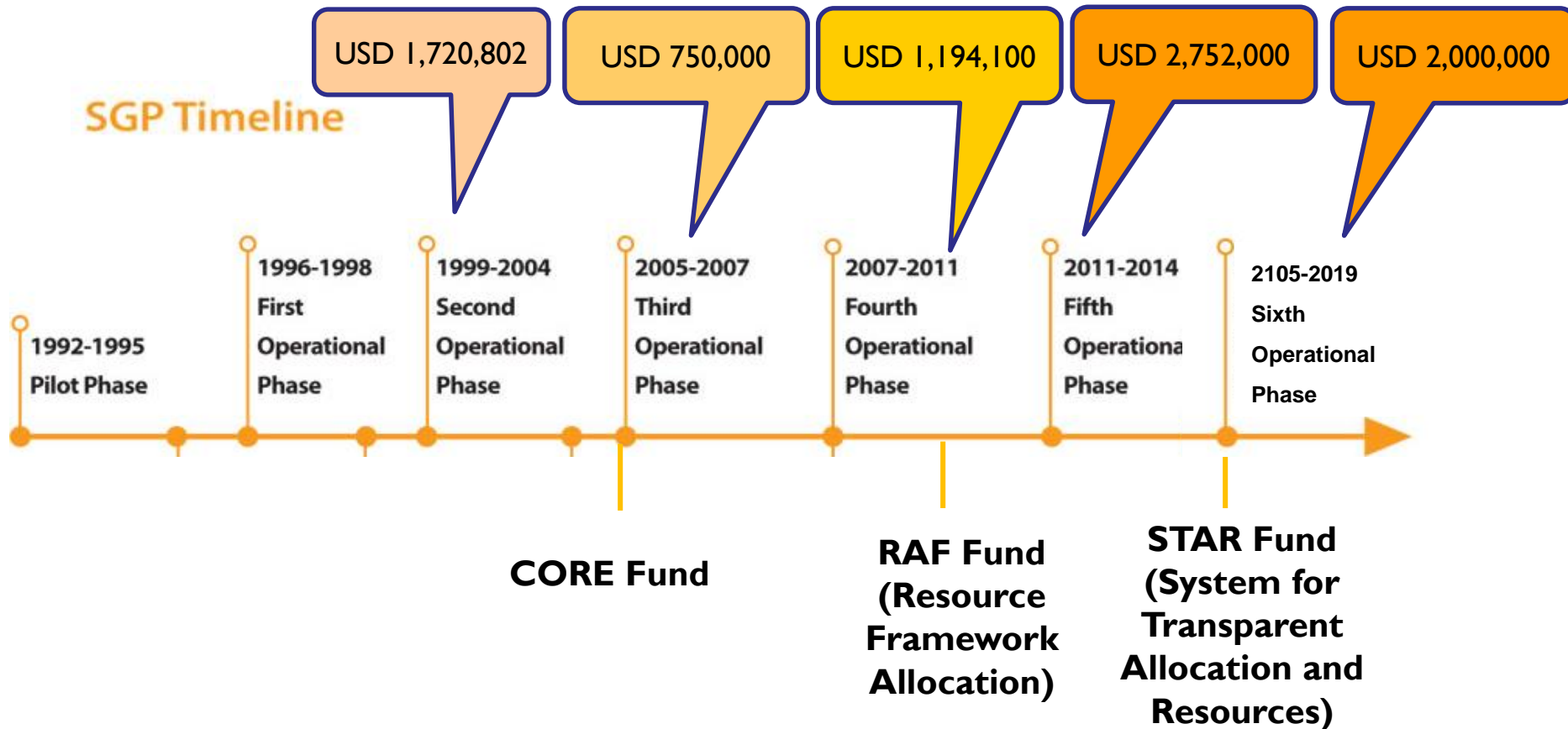
## **Partnerships to Scale-up Community-based Ocean and Coastal Management**

Lee Shin Shin  
National Coordinator  
SGP Malaysia  
28 November 2018

# GEF-SGP

## *SGP Operational Phases in Malaysia*

### SGP Timeline



# GEF-SGP Malaysia

**Total number of project**

**178**

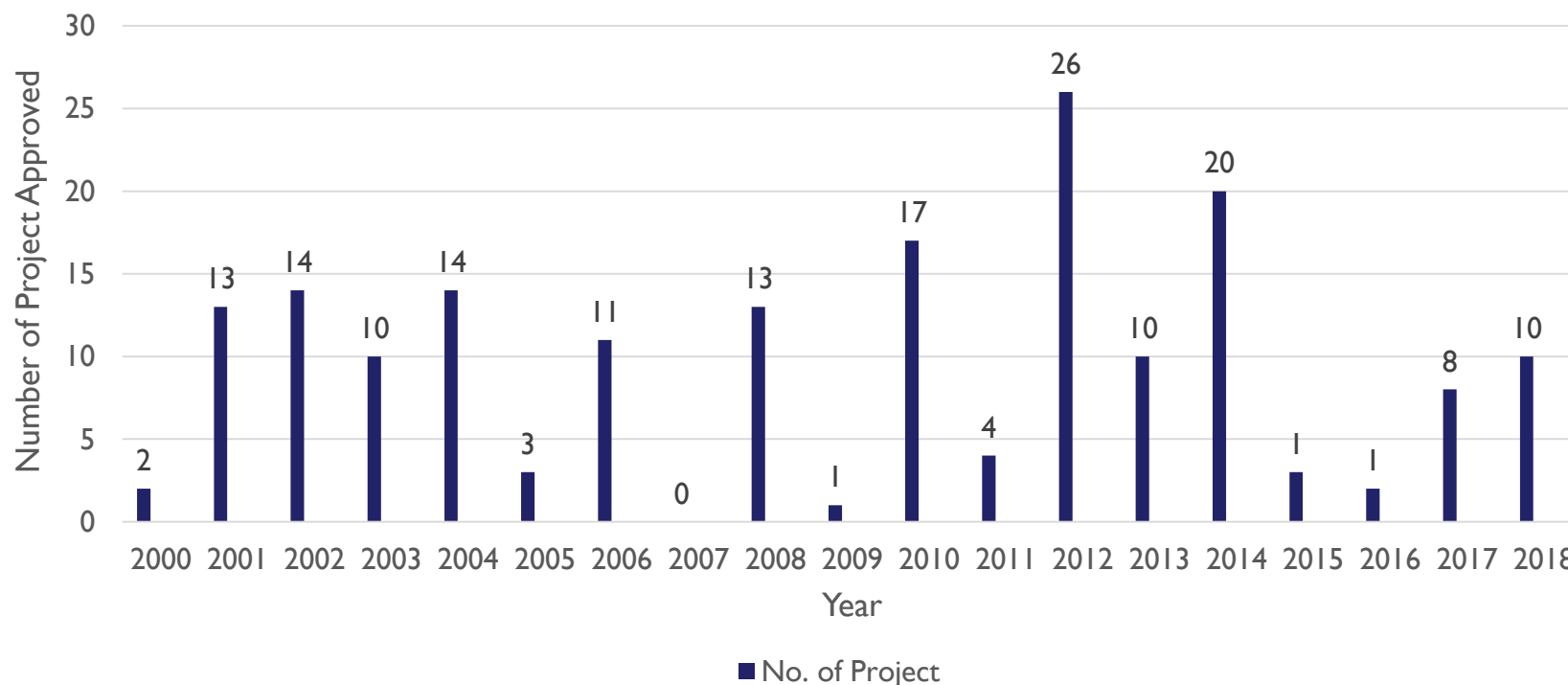
**Total amount in Grants**

**US\$ 8,416,902**

**Total number of grantees**

**>100**

Total number of Projects Approved by Year



# Innovative & Scalable Initiative

*SGP Malaysia has been the programme served as local community incubators of innovation & scalable initiatives, we are now ready to broaden the replication of best practice through larger projects and support to the government policy change*

## SGP Malaysia

# Innovative & Scalable Initiative for GEF-7

## GEF 7: Community-Based Threatened Ecosystems & Species Conservation Community Co-Management

- Community adopted in the government Protected Area (PA) work-force.
- Government recognising & include communities in management of PA.
- Sustainable use of Biodiversity with indigenous peoples.



## GEF 7: Social Inclusion Youth Empowerment

- Delegation to Int. COP
- Skill Training for rural youth in Renewable energy



## GEF 7: Low-Carbon Energy Access Benefits Remote Rural Electrification

- Government Adoption of SGP Model
- SGP model as part of the Rural Development policy for rural electrification

## GEF 7: Sustainable Agriculture & Fisheries Food Security

- Climate resilience & good practises in farming incorporated into National Agriculture policy
- Promotion & Training of good practices in farming.



**SGP** The GEF  
Small Grants  
Programme  
Malaysia

## GEF 7: Chemicals & Waste Management Workable SGP model to Policy Change

- Workable waste solution from SGP to be incorporated into government policy
- Communities efforts in reduction of solid waste & chemical used

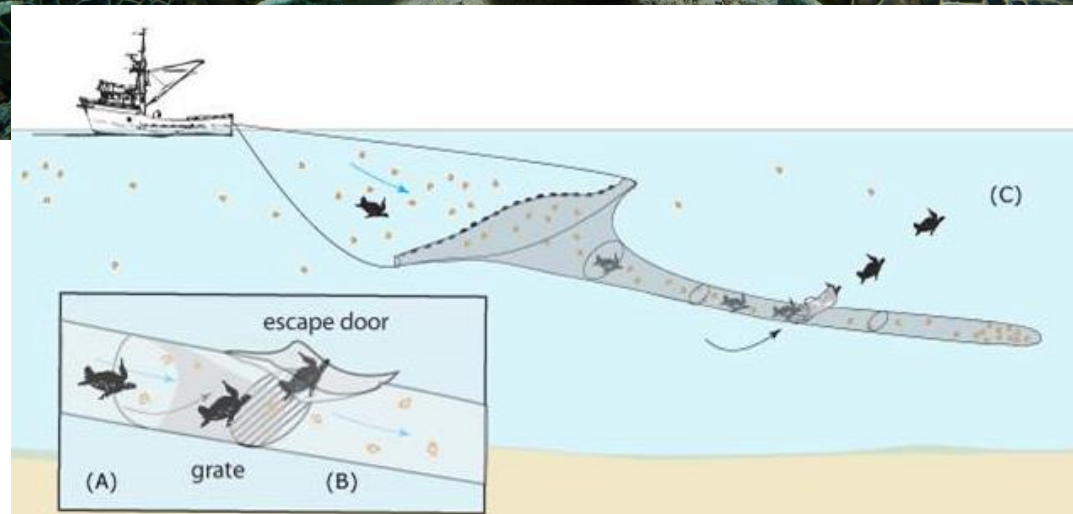
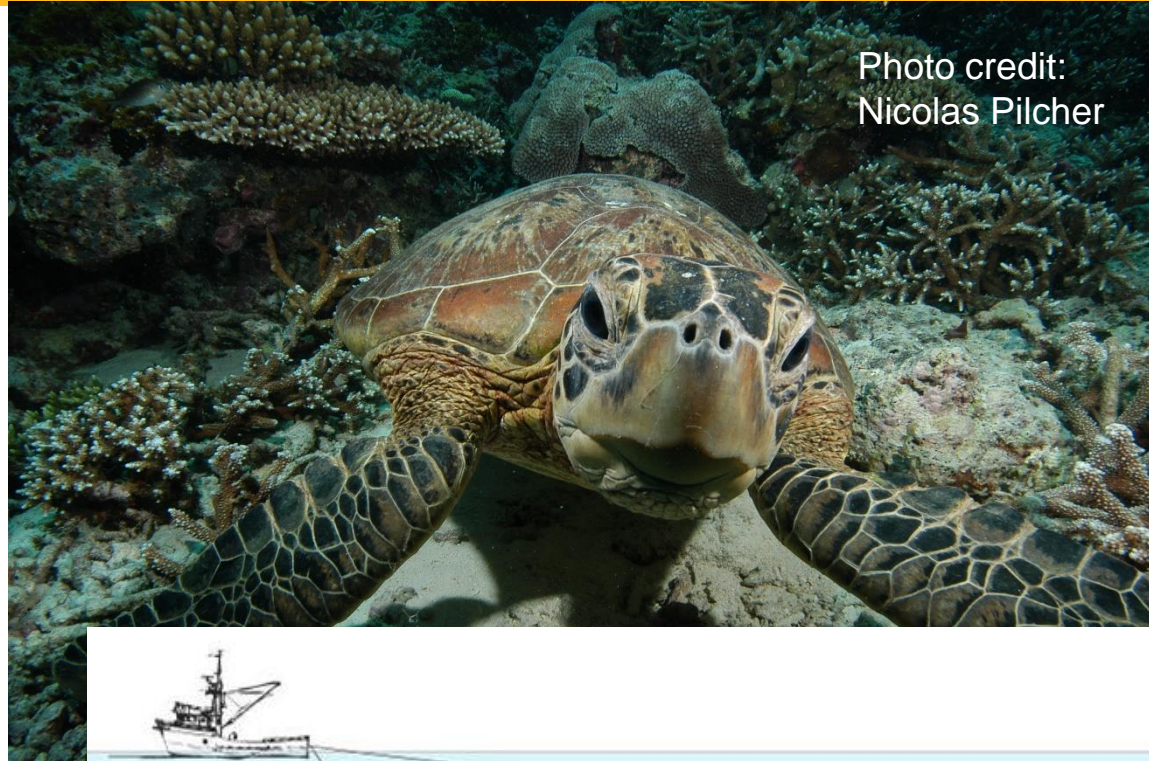


## Sustainability: Community Entrepreneurship

- Community Corporation to market local products nationally & internationally.
- Business design: Market, channel, value propositions, customers, revenue, cost & partners



# Project I: Reducing By-Catch Turtle Excluded Device (TED)





# Transitioning from a NGO to a Government Programme & Policy

**2007**

Through an **SGP** grant, MRF introduced TEDs for trawl fisheries in Sandakan, Sabah



**2008**

MRF signs MOU with Fisheries Dept of Sabah



**2009**

A 2nd **SGP** grant expands TED trials to new fishing ports & integrate with Federal Fisheries Dept

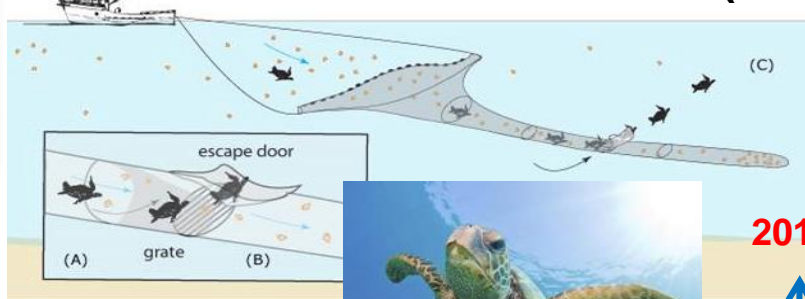


**2012**

MRF brings policy makers on study visit, approaching the TED implementation plan from the bottom up and from the top down



## Turtle Excluder Devices (TED)



**2017**

**National policy change:**  
Legally required for all shrimp trawlers to use TEDs in Peninsular Malaysia (east coast) fisheries as of 2017. This will be followed by full National adoption via legal licencing requirements by 2022.

**2013**

Director General of Dept of Fisheries Malaysia witnessed MRF TEDs trials & certification.



**2015**

MRF undertakes national workshops together with Dept of Fisheries



**2014**

MRF receives a **Strategic grant** to expand the TEDs program nationwide

A locally adapted TED is produced

















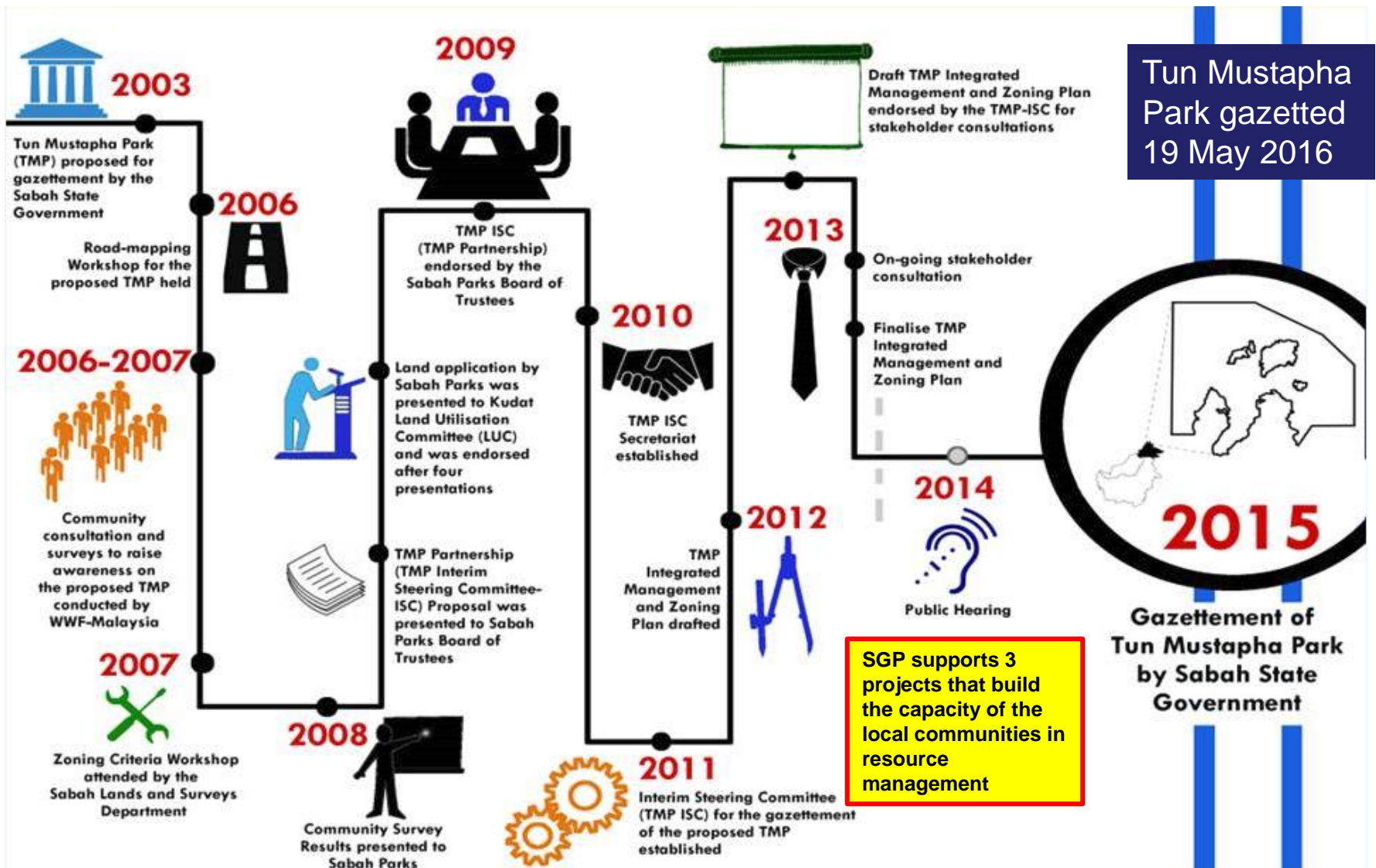




# Lesson Learnt

- Upscaling has not happened accidentally, it was intended and nurtured through **ten years** of continuous effort working with different partners.
- This project has been replicating activities as it expanded from port to port and State to State, using processes developed during SGP-funded Phases I and II.
- The project started as NGO-led initiative in Six states to National Government-led programme across all major shrimp trawling states in the country
- Regulations have been adopted to govern for TED use and licensing.

# Project 2: Road to gazettement: Tun Mustapha Park (WWF Malaysia)



# Project Component

1. Building capacity and empowering local communities and stakeholders to conduct patrolling and collaborative enforcement,
2. Promoting environmental stewardship,
3. Developing conservation enterprises linked to resource management,
4. Building capacity for the implementation of an ecosystem approach to fisheries management.



# Community Based Resource Co-Management towards the Conservation of Biodiversity in Tun Mustapha Park

## MAIN OBJECTIVE

Build support for the gazettement & management of TMP through capacity building & empowerment of local communities in resource management & monitoring

Sustainable Development

Alleviation of poverty

Conservation of species and ecosystems

Area almost 900,000ha

Important habitat for marine life

Tun Mustapha Park - Gazetted 19 May 2016

Population ~ 85,000 coastal people

Multiple use Park (IUCN Cat. VI)

**2014 - Strategic Project by WWF**

P. Tigabu

P. Balambangan

P. Banggi

Kg. Taritipan

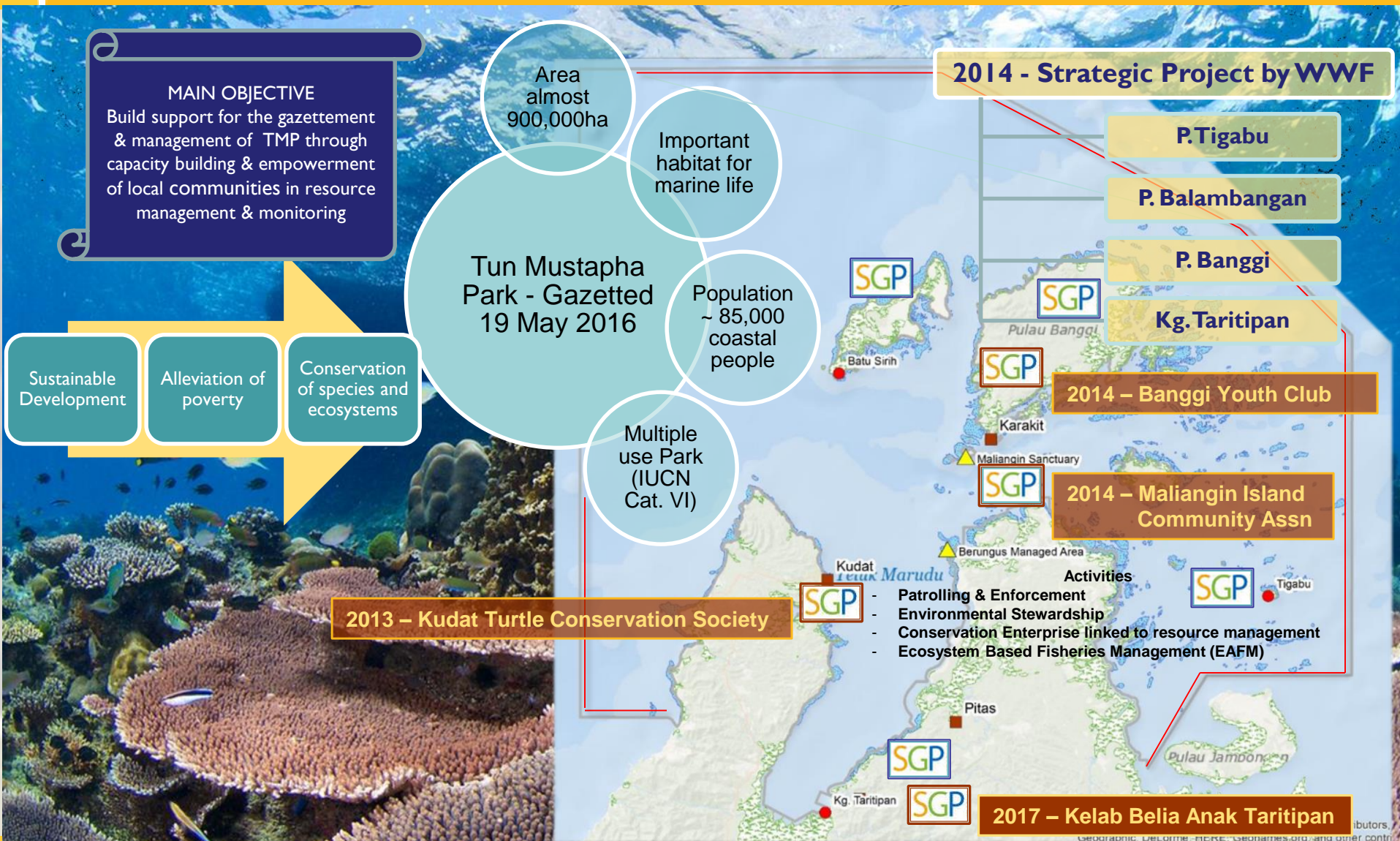
**2014 – Banggi Youth Club**

**2014 – Maliangin Island Community Assn**

**2013 – Kudat Turtle Conservation Society**

- Patrolling & Enforcement
- Environmental Stewardship
- Conservation Enterprise linked to resource management
- Ecosystem Based Fisheries Management (EAFM)

**2017 – Kelab Belia Anak Taritipan**



# Patrolling



GPS coordinates were recorded during the patrolling.

Sea patrolling team in action.



Photo credit: WWF Malaysia



# Sea Patrolling Points





# Citizen Science









# Nature Farming





# Conservation & Ecotourism





# Turtle Hatching & Release





# Coral Rehabilitation





# Beach Clean-Up

