

Public-Private-People Partnerships on Plastic Waste Management in Thailand

EAS
CONGRESS
2018

27–30 November 2018
Iloilo Convention Center
PHILIPPINES

BENJAMAS CHOTTHONG
27 November 2018

Presentation Issues

- **Waste situation in Thailand**
- **P4 on plastic waste management**
- **Practice cases**
- **Lesson learns**

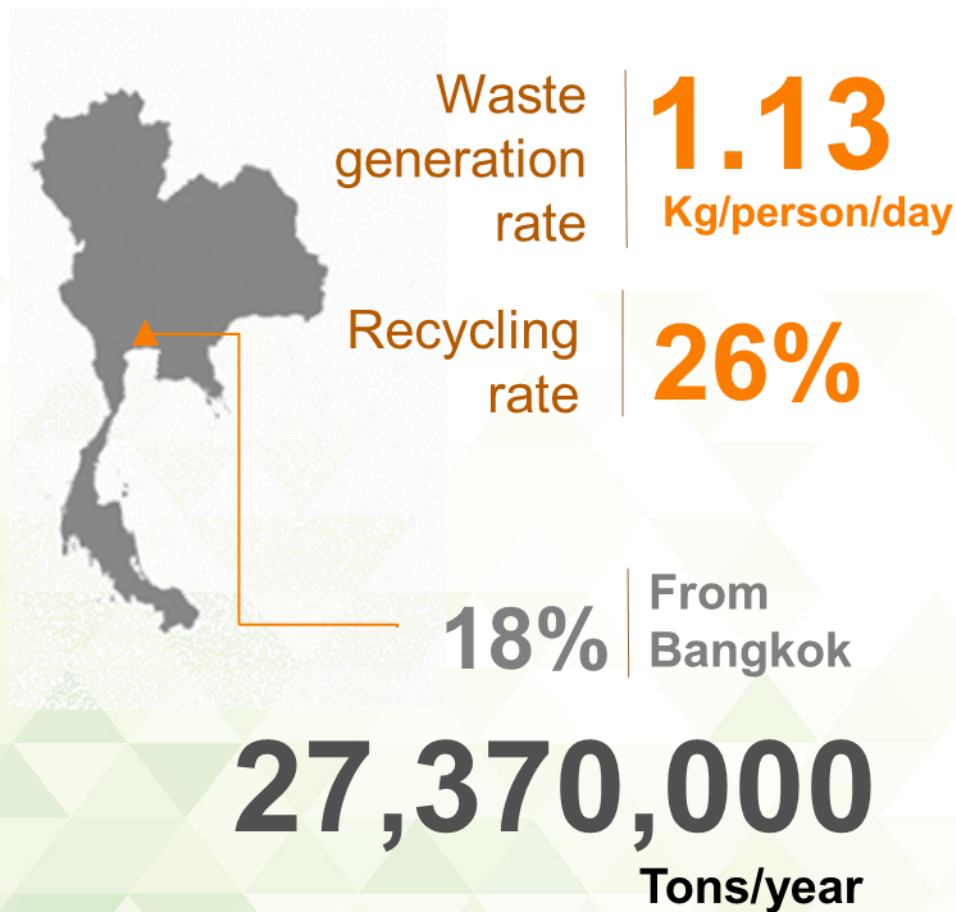
TEI is a **non-profit organization**, founded in 1993

TEI was founded on the belief that **partnerships** are the most effective approach to achieving **sustainable development**.

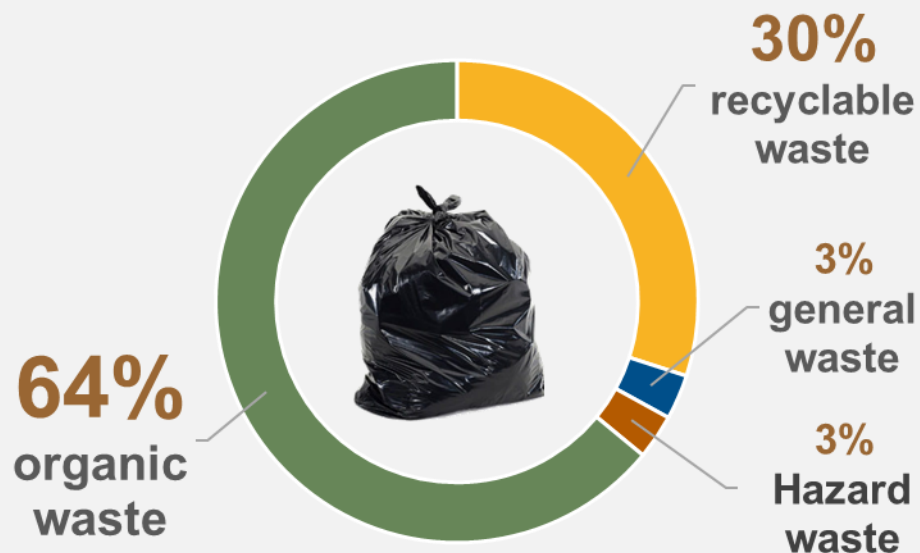
TEI is an **action-oriented think tank** & serves as a reliable and up-to-date source of environmental knowledge

TEI is among the world's top environmental think tanks for 6 consecutive years has been ranked by University of Pennsylvania.

Waste situation in Thailand



Source: PCD, 2018



marine debris

~1,000,000 Tons/year

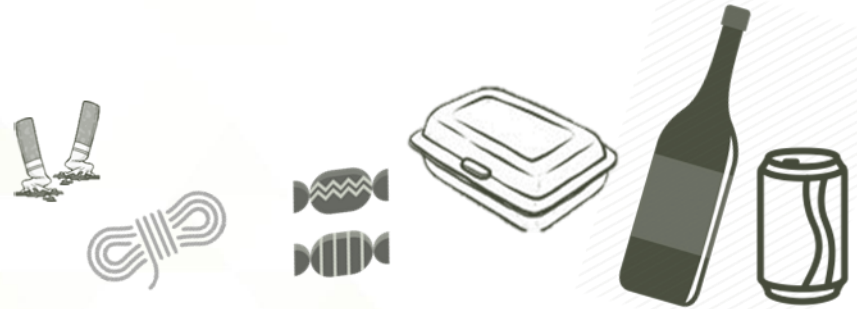
Three blue wavy lines are positioned below the text, representing the ocean or water.

Plastic **60%**



Source: DMCR, 2018

Others **40%**



marine debris

~1,000,000 Tons/year

“Solid waste became
as a national agenda
since 2014”

- Reduce waste generation
- Increase waste recycling and utilizing to energy
- Increase proper waste disposal



Major government organizations on (municipal) waste management

Ministry of Interior

- Department of Local Administration

Ministry of Natural Resources and Environment

- Office of Natural Resources and Environment Policy and Plan
- Department of Pollution Control
- Department of Environment Quality Promotion
- Department of Marine and Coastal Resources

Ministry of Public Health

- Department of Health

Ministry of Energy

- Department of Renewable Energy

Ministry of Transport

- Marine Department



**Public
Private
People
Partnerships**

National Environmental Committee

Plastic Waste Management Sub-committee

Public Relation

**Mechanism
for Policy-driven**

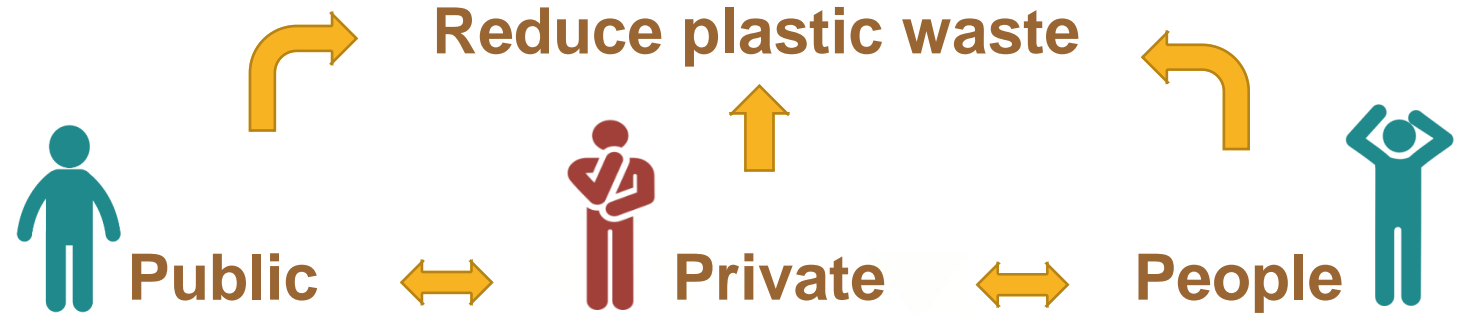
**Circular economy
R&D**





Public Private People Partnerships

LEADING ORGANIZATIONS



- **National Environmental Committee**
Ministry of Natural Resources and Environment

...

- **Federal of Thai Industries**
Plastic Business Group
- **Retail Business Companies**
- **Thailand Business Council for Sustainable Development**
CSR and CSV activities

...

- **Local communities**
- **Schools**
- **Universities**
- **Public**

**No plastic bottle
capseal**



**No single-use plastic in
the National Parks**



**No providing single-use plastic
bag in pilot retail branches and
some National Days**



University actions

Mahidol University



Thammasart
University

Chulalongkorn
University





Bring your own cup,
get 5 THB off

นำแก้วมาเองลด 5 บาท



แนะนำ ✓



งดใช้ ✗

**SAVE
THE WORLD**



รักกับโลกร่วมกัน เมื่อซื้อเครื่องดื่ม S&P และ Bluecup



รับส่วนลด
10.-

Inthanin

**Biodegradable
Plastic**

กระบวนการย่อยสลายโดยธรรมชาติ
แบ่งออกเป็น 2 ประเภท

**Non
Compostable**

พลาสติกที่ผลิตจาก
ปิโตรเคมี (Fossil Based)
ย่อยสลายภายใน 1-2 ปี
แตกตัวเป็นสารปนเปื้อน
ที่มองไม่เห็น (Micro Plastic)
กระจายสู่ระบบนิเวศ



**BI
CUP** 100%
MADE
FROM
PLANTS



Compostable

พลาสติกที่ผลิตจาก
วัตถุดิบชีวภาพ (Bio Based)
สลายตัวได้เองโดยธรรมชาติ
ภายใน 180 วัน

Bioplastic
พลาสติกชีวภาพ



อินทนิล แบรินด์อันดับหนึ่งที่มีการใช้ไบโอพลาสติกมากที่สุดในประเทศไทย

Inthanin Coffee Fan Club www.inthanincoffee.com



Zero waste communities & Zero waste schools

- Social capital and community-based solid waste management
- Support by local government and local stakeholders
- Reduce waste from point sources and increase waste segregation, recycling and utilization
- **Motivate community to perform an actions and presenting award to the winners**

Lesson learns



Downstream areas

receives plastic waste from upstream and elsewhere, it's a very challenge ...



Strong **control and measurement** are needed for cutting down plastic from waste generation cycle



Actions taken on plastic wastes

seems too small for changing the situation



Small pieces of plastic usually do not get into the recycling process and become waste



**Environmental Mastery, Moral Integrity,
Accountable Partnerships, and Down-
to-earth Practicality**



**16/151 Muang Thong Thani, Bond
Street, Bangpood, Pakkred,
Nonthaburi 11120 THAILAND**



**Tel no. +662 503 3333
Fax no. +662 504 4826**



<https://www.facebook.com/tei.service>



**Website www.tei.or.th
Email info@tei.or.th**